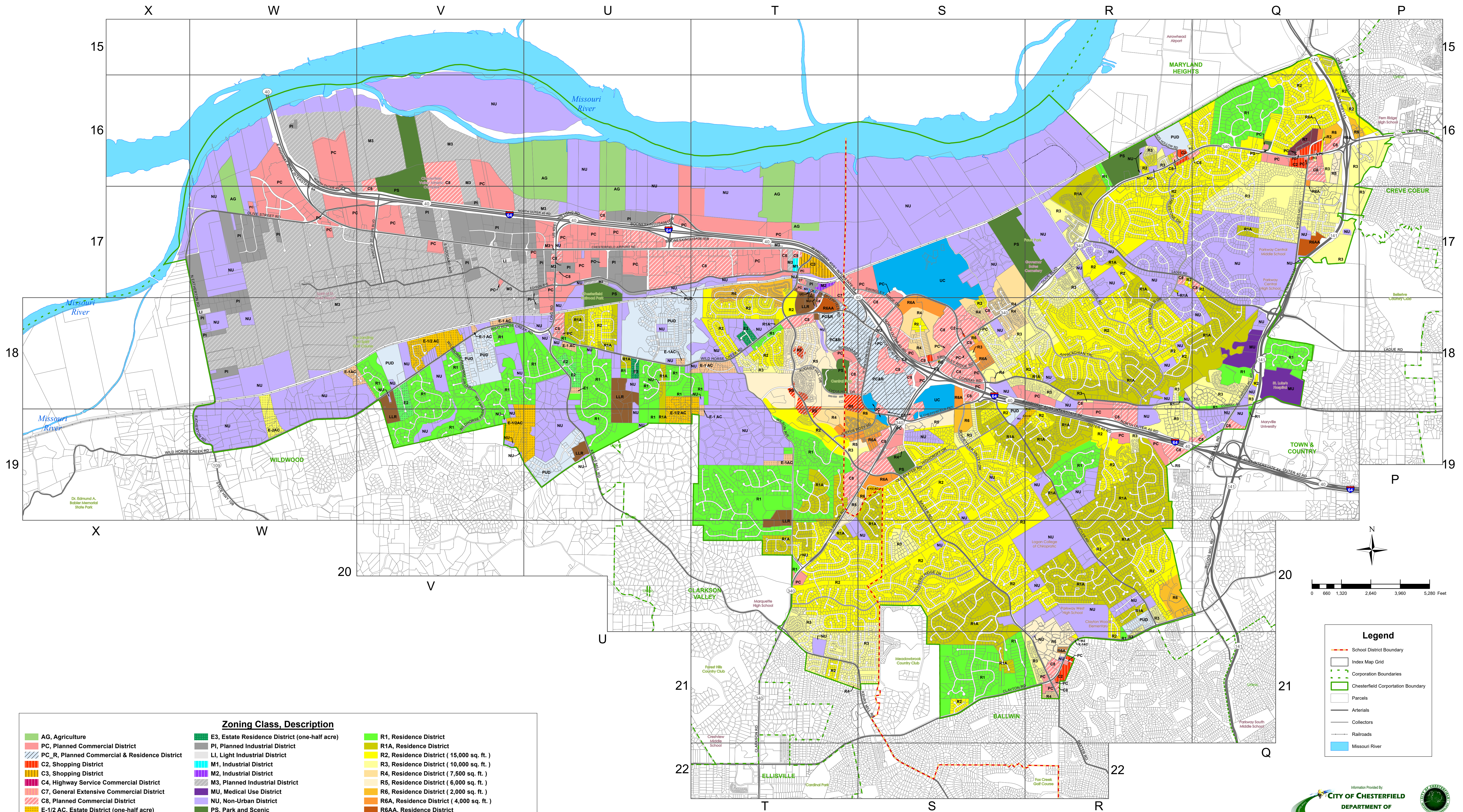
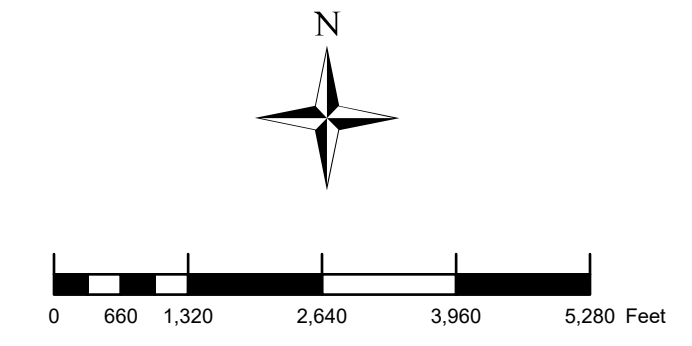




City of Chesterfield - Zoning Base Map



Zoning Class, Description		
AG, Agriculture	PI, Planned Industrial District	R1, Residence District
PC, Planned Commercial District	LI, Light Industrial District	R1A, Residence District (15,000 sq. ft.)
PC_R, Planned Commercial & Residence District	M1, Industrial District	R2, Residence District (10,000 sq. ft.)
C2, Shopping District	M2, Industrial District	R3, Residence District (7,500 sq. ft.)
C3, Shopping District	M3, Planned Industrial District	R4, Residence District (6,000 sq. ft.)
C4, Highway Service Commercial District	MU, Medical Use District	R5, Residence District (2,000 sq. ft.)
C7, General Extensive Commercial District	NU, Non-Urban District	R6, Residence District (4,000 sq. ft.)
C8, Planned Commercial District	PS, Park and Scenic	R6A, Residence District
E-1/2 AC, Estate District (one-half acre)	UC, Urban Core	R6AA, Residence District
E-1 AC, Estate District (one acre)	PUD, Planned Unit Development	R7, Residence District (1,750 sq. ft.)
E-2 AC, Estate District (two acre)	LLR, Large Lot Residential District	R8, Residence District (500 sq. ft.)
E2, Estate Residence District (one acre)		



Legend	
	School District Boundary
	Index Map Grid
	Corporation Boundaries
	Chesterfield Corporation Boundary
	Parcels
	Arterials
	Collectors
	Railroads
	Missouri River