

St. Louis County and Incorporated Communities

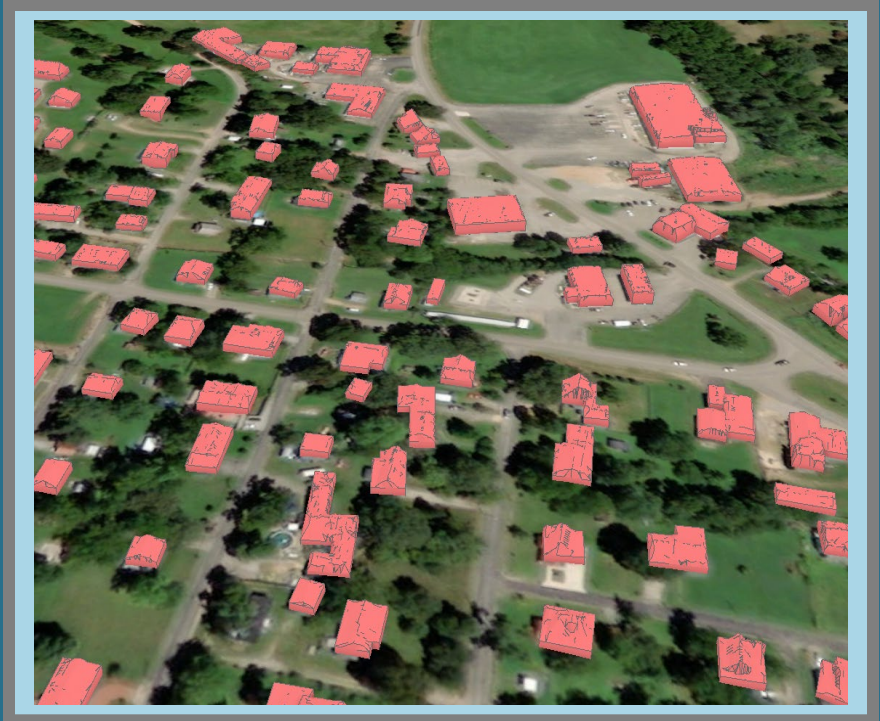
St. Louis County's floodplain mapping project is in the Produce Preliminary Map (PMP) phase. The data has been generated and is ready for submittal to FEMA for the Quality Review #3 (QR3).

Once the data has completed the review and permission has been obtained from FEMA Region 7 to move forward with Preliminary Issuance, draft copies of the new maps will be shipped to each community's CEO for review. It is anticipated that Preliminary Issuance will occur in late April of 2022.

Within 30-45 days of Preliminary Issuance, a series of meetings called Community Consultation and Outreach (CCO) meetings will be held to explain the remaining two phases for moving the project forward. These phases are called Due Process and Community Adoption.

Additional coordination will occur to confirm both the Preliminary Issuance date and dates of the CCO meetings in advance. Thank you for your patience as we addressed local concerns on levees and infrastructure projects.

Reach out to the contacts below if you have questions.



Over the summer, we have been extracting building footprints from the LAS point cloud, which is a part of the LiDAR (Light Detection and Ranging) topography that is now available for this area.

Those footprints will be attributed with the Highest Adjacent Grade, Lowest Adjacent Grade, Flood Zone and Maximum Water Surface based on your mapping elevation results. This data will be available in a digital format to assist in floodplain management and mitigation efforts.

<http://bit.ly/MOSEMAOutreach>

Data can be reviewed under the Preliminary icon at the bottom center of the page



Darryl Rockfield Jr., Project Manager

(573) 526-9383 | darryl.rockfield@sema.dps.mo.gov

Stephen Noe, Program Manager

(615) 430-0456 | stephen.noe@woodplc.com



wood.