

# DEFEATED

## RESOLUTION # 247

**WHEREAS**, the City of Chesterfield was established on June 1, 1988 pursuant to the order of the County Council of St. Louis County; and,

**WHEREAS**, following the incorporation of the City of Chesterfield, the Planning Commission, after considering the views of all who had come before it, accepted the Comprehensive Plan then in effect as approved by St. Louis County; and,

**WHEREAS**, the Planning Commission of the City of Chesterfield adopted on February 12, 1990, a Comprehensive Plan in conjunction with Development Strategies, Inc., in association with Booker Associates, Crawford, Bunte and Brammeier and the Community Advisory Group, consisting of sixty-five (65) citizens of the City of Chesterfield; and,

**WHEREAS**, the Comprehensive Plan Committee of the Planning Commission and the Planning Commission have reviewed the Comprehensive Plan for the area encompassed by the city limits of the City of Chesterfield, with a view toward determining what, if any, changes need to be made to the Plan as adopted on February 12, 1990, and updated by the Planning Commission on May 29, 1991, January 27, 1992, December 14, 1992, October 10, 1994, August 28, 1995, January 13, 1997, and January 12, 1998; and,

**WHEREAS**, a Public Hearing relative to this matter was held before the Planning Commission on the 23<sup>rd</sup> day of November, 1998; and,

**WHEREAS**, the Planning Commission has reviewed the Comprehensive Plan as previously approved and revised, and have considered revisions as recommended by the Valley Master Development Plan Committee; and,

**WHEREAS**, the Planning Commission forwarded their intent to revise the Comprehensive Plan text and plans to the Planning and Zoning Committee of City Council; and,

**WHEREAS**, the Planning and Zoning Committee of City Council reviewed the proposed changes to the Comprehensive Plan and its attached documents as recommended and also as supported by the Planning Commission; and,

**WHEREAS**, the Chesterfield City Council has reviewed the proposed changes to the Comprehensive Plan and its attached documents as recommended by the Planning Commission.

**NOW THEREFORE BE IT RESOLVED BY THE CITY COUNCIL OF THE CITY OF CHESTERFIELD AS FOLLOWS:**

That the City Council of the City of Chesterfield, after review of the Planning Commission's recommended changes to the Comprehensive Plan and the planning documents relative to Phase 3 of the Valley Master Development Plan, and consideration of the Comprehensive Plan and its supporting documents which include the Zoning District Maps, Conceptual Land Use Plan, Parks System Plan, Recommended Street Plan and Planning Policies,

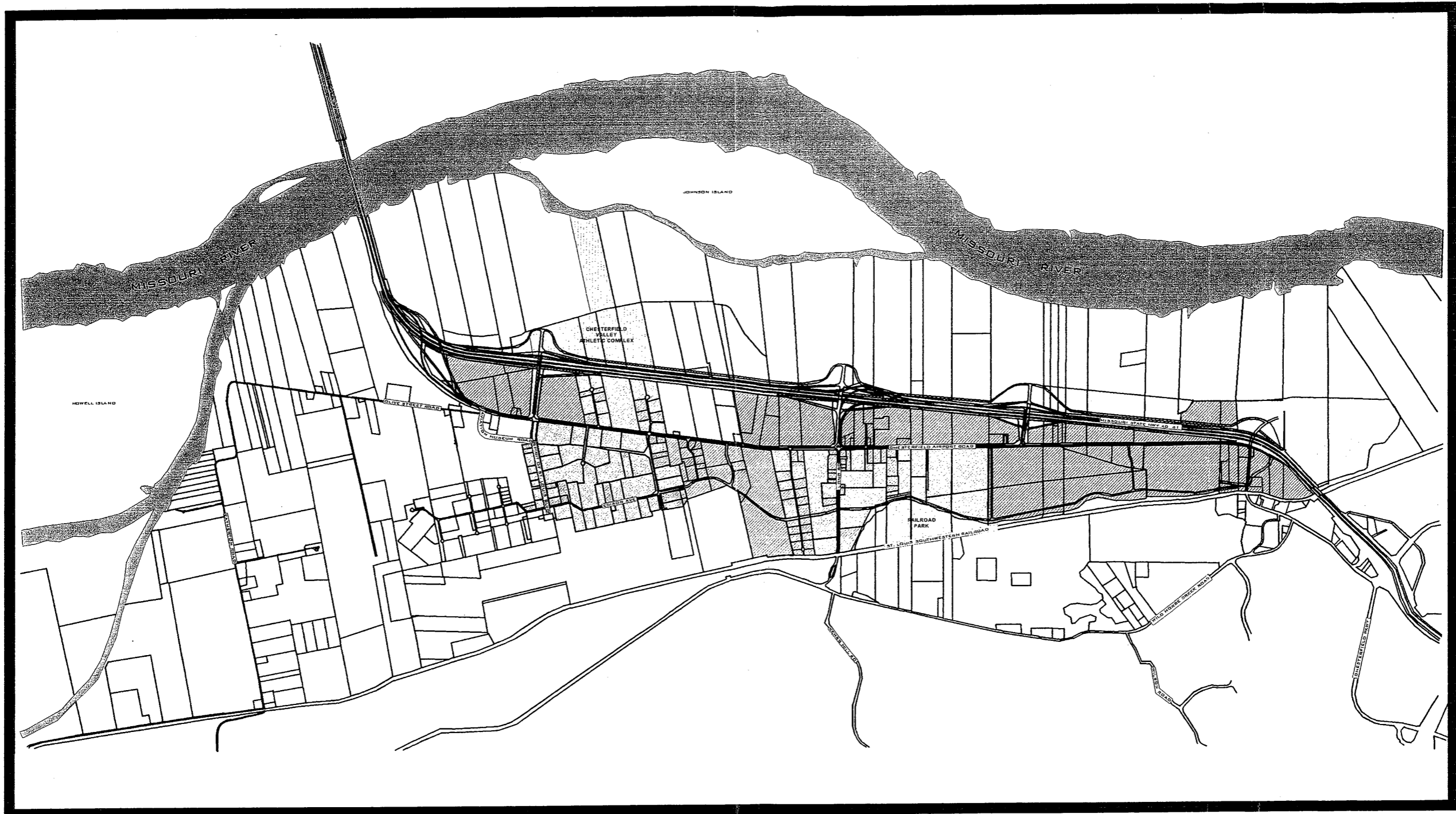
all of which are made a part hereof, does hereby approve the attached amendments to the Comprehensive Plan, and its implementing documents, relative to the following portions of Phase 3 of the Valley Master Development Plan: General Land Use Plan; General Access and Circulation Improvements; Interior Stormwater Drainage Improvements; Sanitary Sewer System Improvements; Water Distribution System Improvements; and, General Landscape and Streetscape Improvements.

**BE IT FURTHER RESOLVED** that this amended Plan be certified by the City Clerk of the City of Chesterfield, signed by the Mayor of the City of Chesterfield and a copy recorded in the office of the Recorder of Deeds of St. Louis County.

\_\_\_\_\_  
Martha L. DeMay, City Clerk

\_\_\_\_\_  
Nancy Greenwood, Mayor



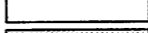


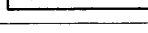
Dated \_\_\_\_\_

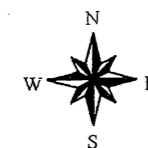


# Chesterfield Valley

## Master Development Plan And Implementation Strategy

### COMPREHENSIVE PLAN (LAND USE MAP REVISIONS PER PLANNING COMMISSION)

-  mixed commercial use
-  mixed use
-  office park
-  service/business park
-  spirit airport
-  parks



NOT TO SCALE